

# INSTRUCTIONS



## BABY WALKER

Approximately from 6 months of age

Maximum weight is 12kgs

**ITEM NO.: CCW3016BR**

## ENGLISH

## WARNINGS

**! THESE INSTRUCTIONS ARE VERY IMPORTANT. PLEASE READ THROUGH CAREFULLY, AND RETAIN FOR FUTURE REFERENCE.**

**PLEASE READ THOROUGHLY BEFORE ASSEMBLING, AS AN INCORRECT ASSEMBLING COULD BE DANGEROUS. THIS PRODUCT SHOULD ONLY BE ASSEMBLED BY AN ADULT.**

**WARNING** — Never leave the child unattended.

**WARNING** — The child will be able to reach further and move rapidly when in the baby walker.

**WARNING** — Never attempt to adjust the height of the walker with the child inside.

### **User Instructions:**

- Prevent access to stairs, steps and uneven surfaces;
- Guard all fires, heating and cooking appliances;
- Remove hot liquids, electrical flexes and other potential hazards from reach;
- Prevent collisions with glass in doors, windows and furniture;
- Do not use the baby walker if any components are broken or missing;
- This baby walker should be used only for less than 20 minutes.
- This baby walker is intended to be used by children who can sit unaided, approximately from 6 months. It is not intended for children weighing more than 12 kg;
- Do not use replacement parts other than those approved by the manufacturer ;
- Insert two 1.5V5 batteries. (not included)
- Different types of batteries or new and used batteries are not be mixed. Batteries that have run out **SHOULD** be removed from the toy.
- The supply terminals are not to be short-circuited.
- Please keep all the relevant information for future reference

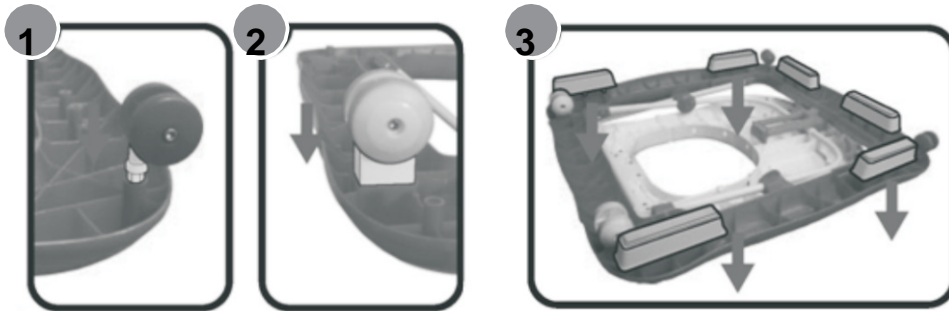
### **Maintenance Tips:**

- Make sure all pieces that need fastening are tightened before use.
- Please check the product over regularly, and keep it in safe places when not used.
- Grease revolving parts such as the friction points of every axles and rotatable parts to guarantee flexibility with solid oil to prolong the life span, and check and fasten the screwed joints once a week.
- Do not use or store in moist ,frigid or high-temperature environments.

## Install Instruction (Assembled by adult)

### A. Wheels and Preventers Assembly

- (1) Insert two swivel front wheels, two rear linearity wheels and six preventers into the corresponding holes under the base plate respectively. Please make sure that they are pressed to the bottom to avoid from falling-off. (Figure 1~3)



### B. Seat Assembly

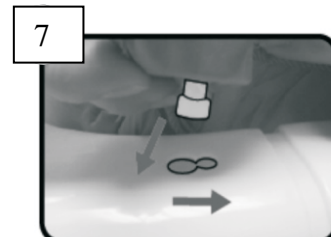
- (1) Insert the plastic backrest plate into the seat fabric and insert the central pin into the loop of seat fabric. (Figure4)
- (2) Lift the upper tray of walker to the highest position.

3. Insert the pins of the assembled seat fabric (fabric pattern may vary) into the holes at the back part of the tray, and use two plastic nuts to fix the seat from the underneath. (Figure 5)



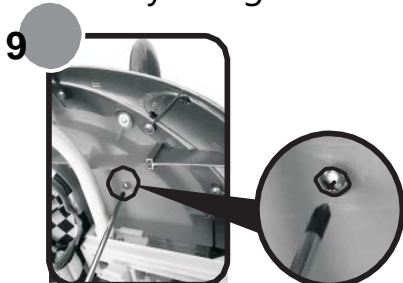
- (4) Insert the three buttons into holes at the front part of the tray and press them down to fix. (Figure6)

- (5) Insert the two buttons into holes at the both sides of the tray and push them backward to fix. (Figure7)

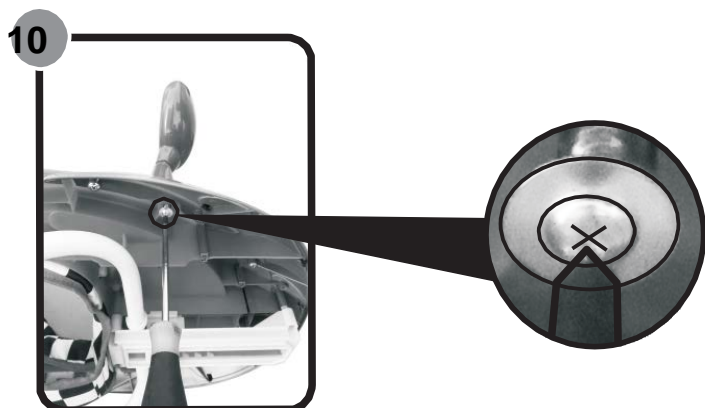


### C. Music Tray Assembly

- (1) Insert two 1.5V AA batteries with correct polarity into the battery box at the back of music tray. Always screw the cover to the battery box to avoid danger.
- (2) Place the music tray on the upper tray. Fix them with two screws from the back of the tray. (Figure 8、9)



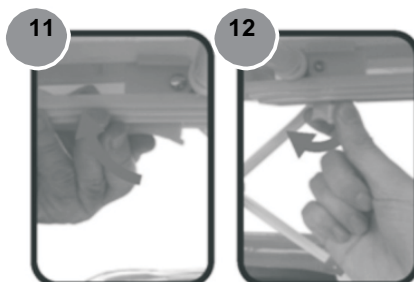
- (3) Insert the mirrors into the holes on the upper tray, and fix them with two screws from the bottom of the tray (from underneath). (Figure 10)



**Always make sure the lock is engaged before placing your child in the walker.**

### D. Height Adjustment (3-height position is available)

- (1) There is an instruction about safety lock function of the adjuster on the adjuster. Please read it carefully.
- (2) Adjust the height of the upper tray by Pressing and turning the adjuster under the upper tray



**WARNING** — Never leave the child unattended.

**WARNING** — The child will be able to reach further and move rapidly when in the baby walker.

**WARNING** — Never attempt to adjust the height of the walker with the child inside.

**WARNING:** Never leave a child unattended in this product.



Made in China for Bebe Style Ltd  
NW2 1BG

info@bebestyle.co.uk  
www.bebestyle.co.uk